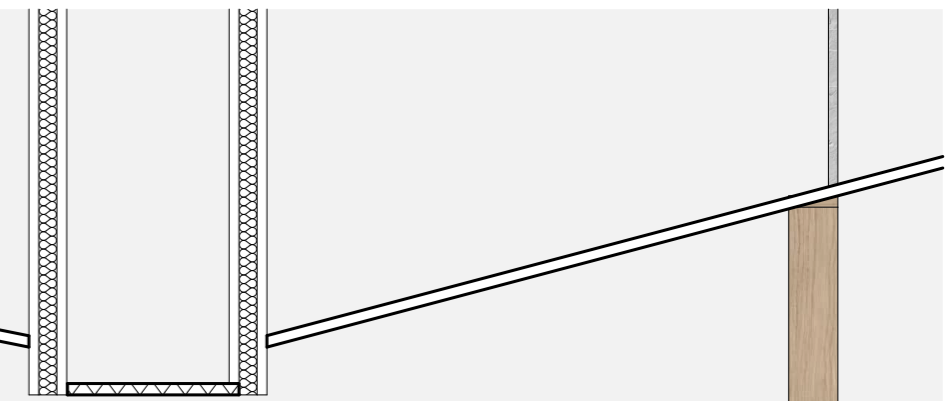


- Structure Bois Massif
- Habillage panneaux CP Epaisseur 18mm
- Assemblages invisible par tenon / mortaise
- Finition vernis incolore



Marche bois

- Dossier structure Bois Massif, habillage CP bouleau

- Piètement BM + habillage CP bouleau

Technical drawing of a wooden table with dimensions. The table has a rectangular top and four legs. The dimensions are as follows:

- Top surface width: 603
- Top surface depth: 40
- Table height: 41
- Distance from left edge to first leg: 189
- Distance between first and second legs: 189
- Distance between second and third legs: 603
- Distance from third leg to right edge: 185
- Distance from left edge to right edge: 10
- Distance from top surface to bottom surface: 4
- Distance from bottom surface to table height: 4
- Distance from top surface to table height: 4
- Distance from bottom surface to table height: 4

149	13
-----	----

Ouvrage :		Maître d'ouvrage:			Maître d'oeuvre	
CPAM des Flandres 6 rue des Nieulles, 59280 ARMENTIERES		CPAM des Flandres			TiM architecture 26 rue Faidherbe, 59200 Tourcoing	
N° de plan:	Titre:	Echelle :	Format :	N° de projet :	Dessinateur:	Etat du projet :
T107_PRO	09_Agencement MDA 02	1:20	A3	T107	Gourguechon / Guillardau	Etudes
					Date :	
\\\nastim\TIM06_TRAVAI\T107_CPAM_Armentieres\T107_4_Travail\T107_05_PRO\00_MNIT107_PRO_260211.pln						